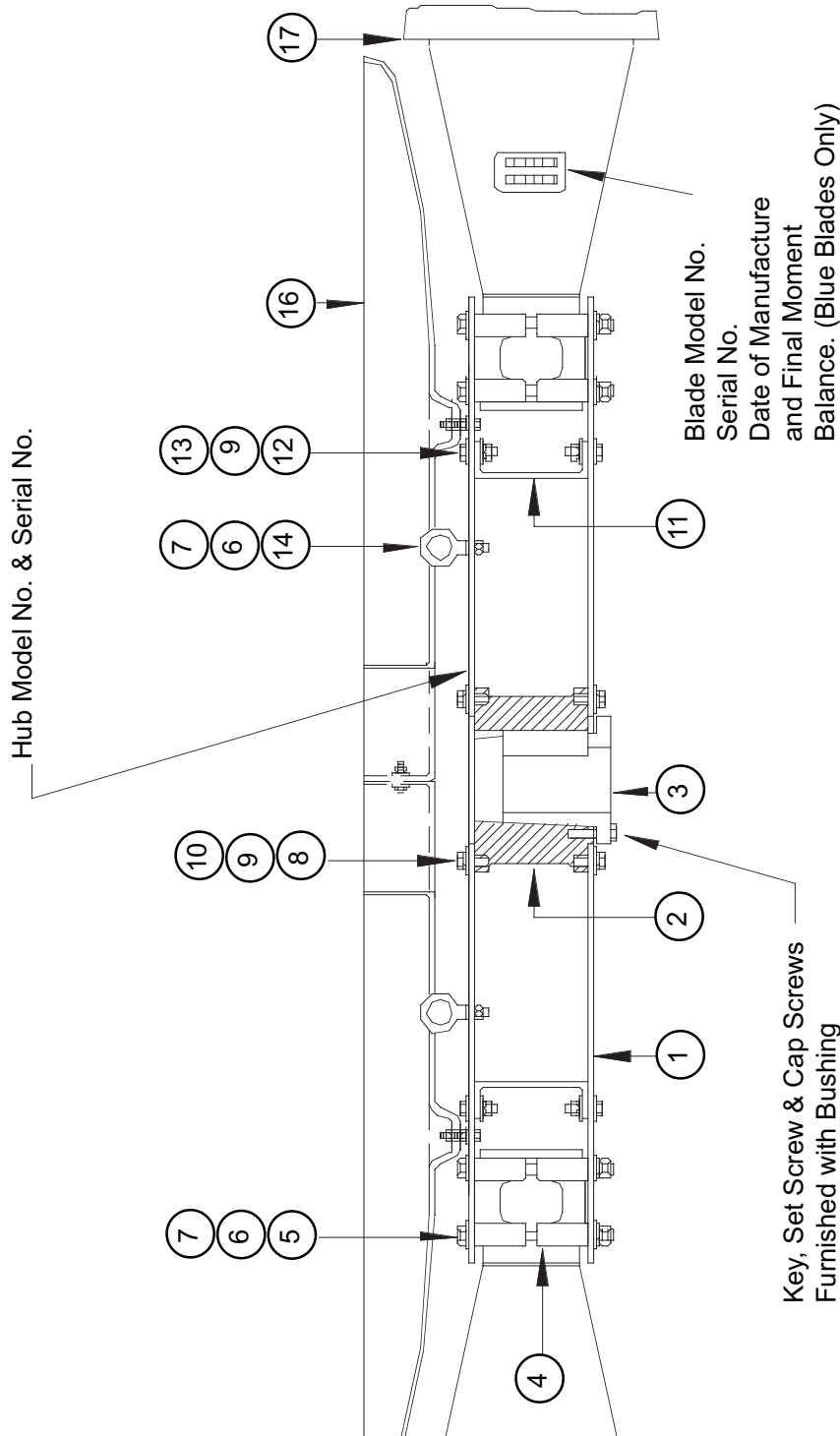


## 6000 Series Tuf-Lite Fans



PROJECT NAME AND LOCATION:			
MODEL NO.:			
DWG NAME:			
DRAWING NUMBER: A-100	JOB NUMBER:	SHEET 1 of 1	REV: 0
SCALE: NO SCALE	COMMENTS:		

THIS DRAWING IS THE SOLE PROPERTY OF COOLING TOWER DEPOT INC. USE SHALL BE LIMITED TO THE PROJECT FOR WHICH IT IS INTENDED, NO REPRODUCTION SHALL BE MADE NOR SHALL THIS INFORMATION BE MADE AVAILABLE TO THIRD PARTIES WITHOUT THE PRIOR WRITTEN CONSENT BY COOLING TOWER DEPOT INC. ANY AND ALL PROPRIETARY RIGHTS TO THIS INFORMATION AND DESIGN ARE THE SOLE PROPERTY OF COOLING TOWER DEPOT INC.

REVISIONS					
REV.	DESCRIPTION	DESIGNED BY:	CHECKED BY:	APPROVED BY:	DATE:
0					
1					
2					
3					
4					

COOLING TOWER DEPOT, INC  
CORPORATE CIRCLE  
GOLDEN, CO 80401  
720-746-1234

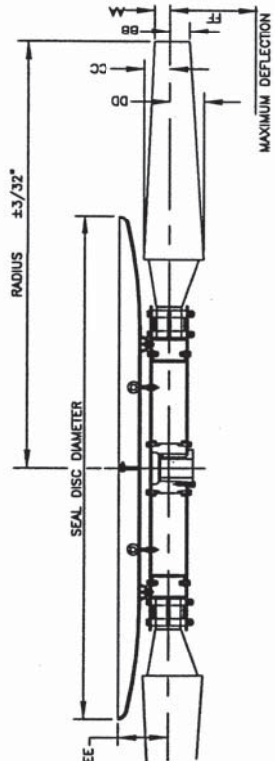
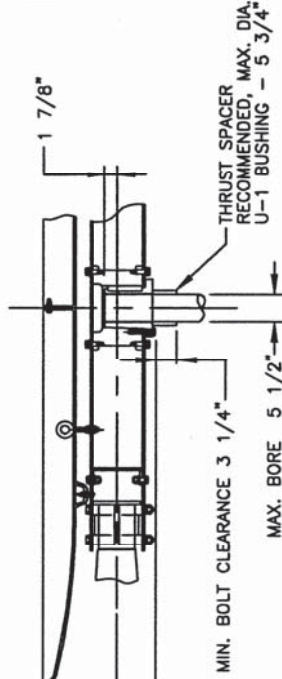
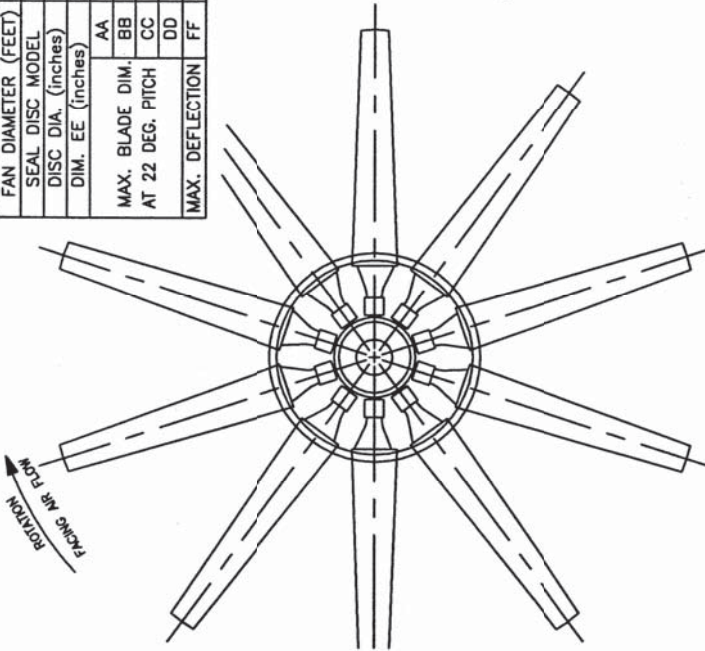
REV. NO.	0	SCALE:	NO SCALE
SHEET	1	NO. OF SHEETS	1
JOB NUMBER:			
DWG. NUMBER:	A-100		

# 6000 Series Tuf-Lite Fans

HUB MODEL	FAN WEIGHTS (LBS)					
	U-1	24'	26'	30'	32'	10M
6	6806					2377 2637
7	6807					2505 2765
8	6808					2633 2893
9	6809					2761 3021
10	6810					2889 3149
11	6811					3017 3277
12	6812					3145 3405
13	6813					3273 3533
14	6814					3401 3661
15	6815					3528 3788
16	6816	3048	3224	3394	3544	3656 3916
18	6818	3228	3426	3606	3786	3912 4172

STANDARD DIMENSIONS - MODEL H BLADES		24	26	28	30	32	10M
FAN DIAMETER (FEET)		24	26	28	30	32	10M
SEAL DISC MODEL		81132	81132	81132	81132	81132	81132
DISC DIA. (inches)		112	112	112	112	112	112
DIM. EE (inches)		11.00	11.00	11.00	11.00	11.00	11.00
	AA	4.56	4.19	3.81	3.51	3.17	3.17
	BB	3.78	3.48	3.17	2.92	2.58	2.58
MAX. BLADE DIM. AT 22 DEG. PITCH	CC	10.28	10.42	10.54	10.65	10.79	10.79
	DD	9.10	9.26	9.39	9.51	9.60	9.60
MAX. DEFLECTION	FF	10.00	11.00	12.00	14.00	14.00	14.00

1. FOR HUB INSTALLATION AND OPERATION SEE MANUAL IN 6000H.
2. THRUST SPACER RECOMMENDED IF GEAR BOX SHAFT HAS NO SHOULDER.
3. THE AA, BB, CC AND DD DIMENSIONS CAN VARY AS MUCH AS 1/2 INCHES DEPENDING ON HOW THE BLADES ARE TRACKED.
4. A MINIMUM CLEARANCE OF DIMENSION FF UNDER BLADE TIPS IS REQUIRED.



ACFM	STATIC PRESS.	IN. WATER
TEMP.	DENSITY RATIO	ALT. FT.
FAN R.P.M.	PITCH ANGLE (APPROX.)	+ ° TO -
FAN MODEL	HUB MODEL	
BLADE	BORE	KEYWAY
QTY.		
P.O. NO.	HUDSON JOB NO.	DATE
APPROVED		DRAWING NO.
HUDSON PRODUCTS CORPORATION		CP-6000H
HOUSTON, TEXAS		
CERTIFIED PRINT		

5	4	3	2	1	REVISION
CY	CRG	CRG	CRG	CRG	REVISION BY
10/24/95	8/20/95	8/4/95	4/2/95	1/23/95	APPROVED BY
					DATE